

Walking Beam Underslung Suspension (5" Round) Installation & Maintenance

**For Your Trailer Axle Suspension Needs Call York :
Head Office**

Singapore York Transport Equipment (Asia) Pte. Ltd.

No. 5 Tuas Avenue 6, Singapore 639295

Email : enquiry@yorktpt.com.sg

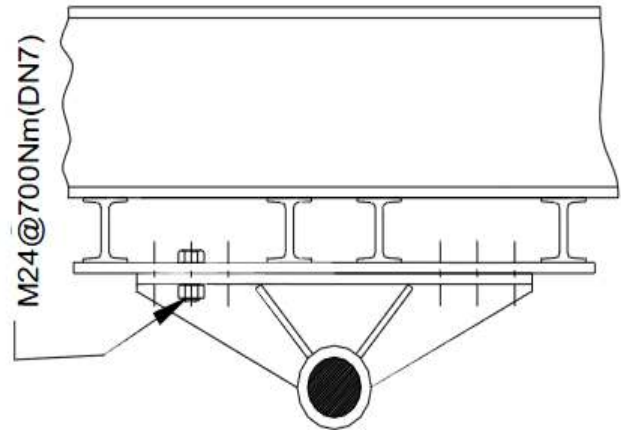
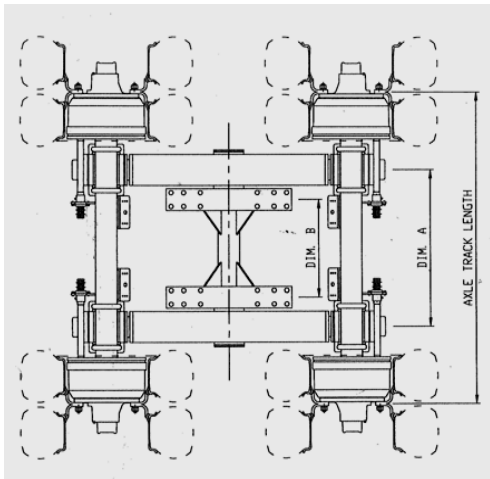
Tel : (65) 6861 0577 Fax : (65) 6861 4045

Walking Beam Installation

Below are typical chassis structures and installations of Walking Beam Under slung Suspension (5"Round). Fit Walking Beam to trailer chassis with 4 bolts and nuts at 4 corners of mounting pedestal, tighten nuts to 200Nm for axle alignment (see below).

After axle alignments, fit rest of bolts and nuts and tighten all nuts to torque required.

Bolt - M24 at 700Nm



Underslug Suspension Mount

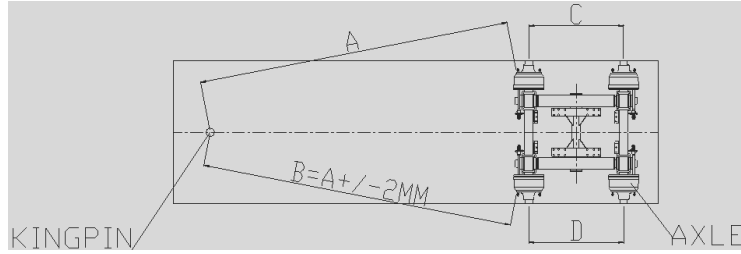
Dim A	Dim B	Dim C
960	610	1850

Axle Alignment

Measure from the centre of the kingpin to the centre of each end of the front axle and adjust as necessary (by using a hide mallet or Porta power) until the dimensions A and B are equal. After alignment, weld metal blocks around the pedestals to fix position of DN mounting plate against trailer chassis beam.

Alignment of the rear axle (axles) is built-in by factory.

NOTE: Alignment can also be achieved with an optical device or laser system designed specifically for this purpose.



$A=B \pm 2 \text{ mm}$

$C=D \pm 2 \text{ mm}$

Final Inspection

A visual inspection of the bogie after installation and assembly should be carried out to ensure that all components are correctly located and seated, as incorrect location or misalignment of the components will greatly reduce the service life of the bogie.

Servicing Intervals (Walking Beam only)

Axle service related to Axles Maintenance and Service Manual.

First Service - 500 km.

Check all torque settings with torque wrench (Important).

Every 10,000 km or every 6 weeks.

Check all torque settings (Especially u-bolt and pivot bolts). Lift trailer to take pressure off the bearing and grease main pivot bush using EP2 or Mobil HP222 until fresh grease emerges. Under extreme conditions, lubricate with more frequency.

Every 100,000 km or Annually.

Check and lubricate as for 10,000 km service.

Check the pivot bushes for wear or deterioration and replace as necessary.

Check the leaf springs for wear, cracks or corrosion and replace as necessary.

Inspect the mounting brackets, spring hoods, spring hood rubber and u-bolt for wear or deterioration and replace any suspect parts as necessary (see below for servicing procedure).

Check tyre wear and the axle alignment as necessary. Axle alignment must be checked whenever severe kerbing, accident damage or spring have been replaced during servicing.

Servicing Procedure

Jack up the trailer. Remove thrust plate and thrust bearing and check the pivot bearings for play by levering the cross shaft and the spring. Bearings should be a tight fit and should be renewed if play is suspected.

New bushes are fitted from each side of the pivot block and should be flushed with the pivot block outer recess, a central gap must exist between the bushes to permit grease flow. Apply grease through the pivot block grease valve until it extrudes from the grease seal.

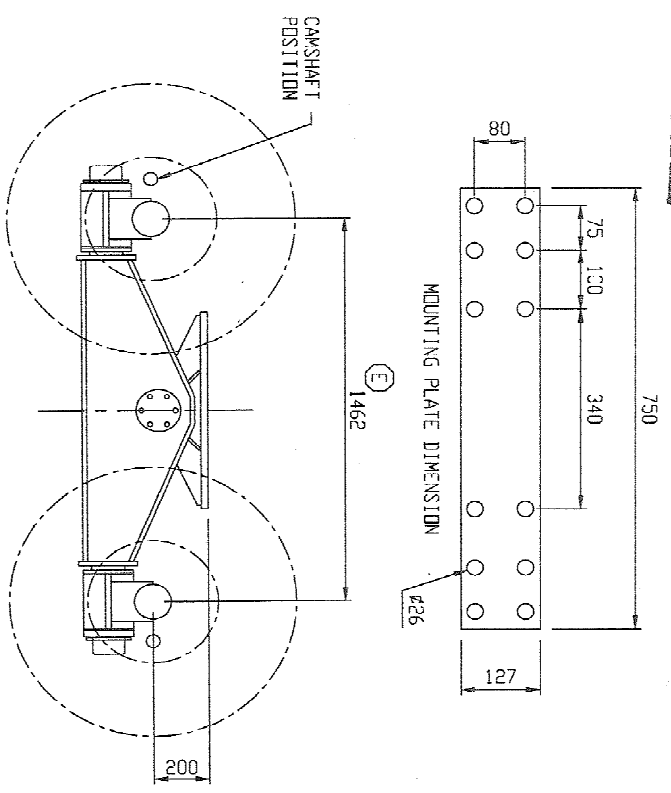
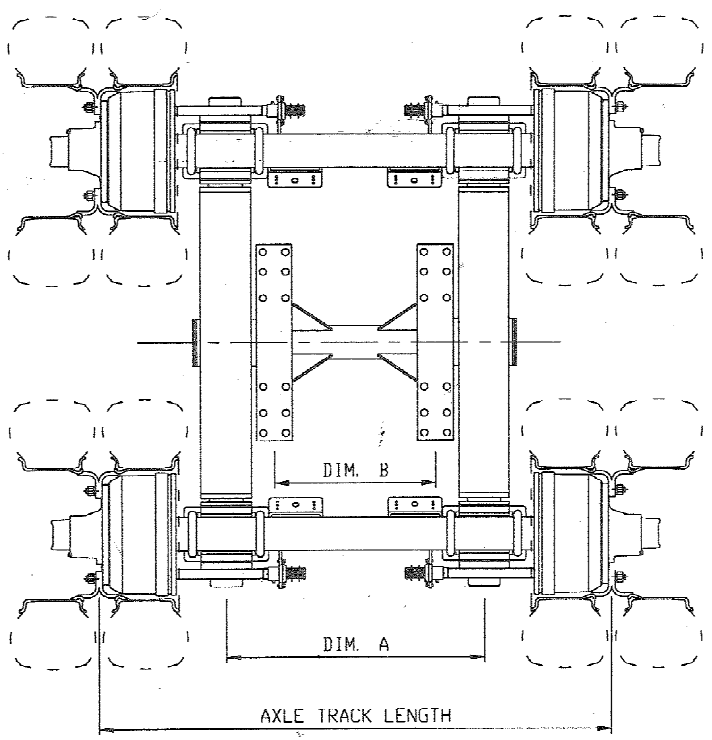
Grease seal must be fitted metal face outwards and the inner face of the thrust plate should be greased before fitting.

The spring hoods and rubbers should be visually checked for wear or damage and components replaced where necessary.

Inspect the leaf spring for wear, cracks or corrosion. Clean the leaf spring thoroughly and replace any suspect leaves.

REV	MODIFICATION	DATE	DRW/CHKD	EAR
E	DIM 1462 WAS 1450	22-11-00	SHTL/FEI	OCT88

ORIGINAL



SUFFIX	APPLICATION	CAMSHAFT	AXLE TRACK	DIAM. A	DIAM. B
WBA001/01	420 x 220, 788801 EQUIVALENT	/02	1850	880	530
WBA001/02	420 x 180, 786115 EQUIVALENT	/01	1850	960	610
WBA001/03	420 x 220, 790206 EQUIVALENT	/02	1850	840	490
WBA001/04	420 x 180, 790204 EQUIVALENT	/01	1850	920	570

TYRE SIZE : 10.00 R20 DR 11.00 R20
RIM SIZE : 20 - 8.0 FOR 10.00 - R20 TYRE
20 - 8.5 FOR 11.00 - R20 TYRE
WHEEL MOUNTING : 10 STUD, 335 PCD
1SD, DIN, BSF
CAPACITY : 30T/25kph

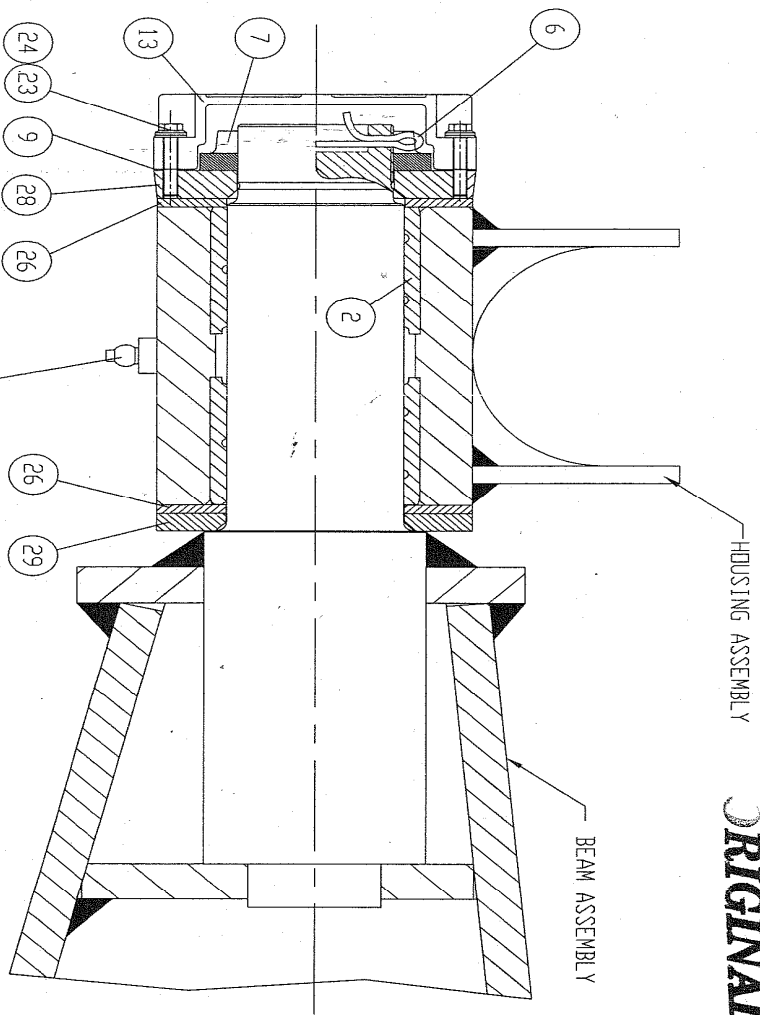
YORK TRANSPORT EQUIPMENT (ASIA) Pte. Ltd.	
EAR NO.	MATERIAL
DESIGN BY	KBLJW
CHECKED BY	FEI
APPROVED	CPV
DATE	07-09-92
DRG. NO.	WBA001
SHEET	1 OF 1
REV	E

COPYRIGHT © 1992 YORK TRANSPORT EQUIPMENT (ASIA) PTE. LTD. ALL RIGHTS RESERVED.

SA3	OKM/N	80000	13N1
500			
511	ST9		
3	DIN	MD12	
3	1	1	1

ORIGINAL

REV	MODIFICATION	DATE	DRN/CHKD	EAR
A	FIRST ISSUE	31-07-02	SITI/YY	02056



25Nm
LUBRICATE
EVERY 10,000km

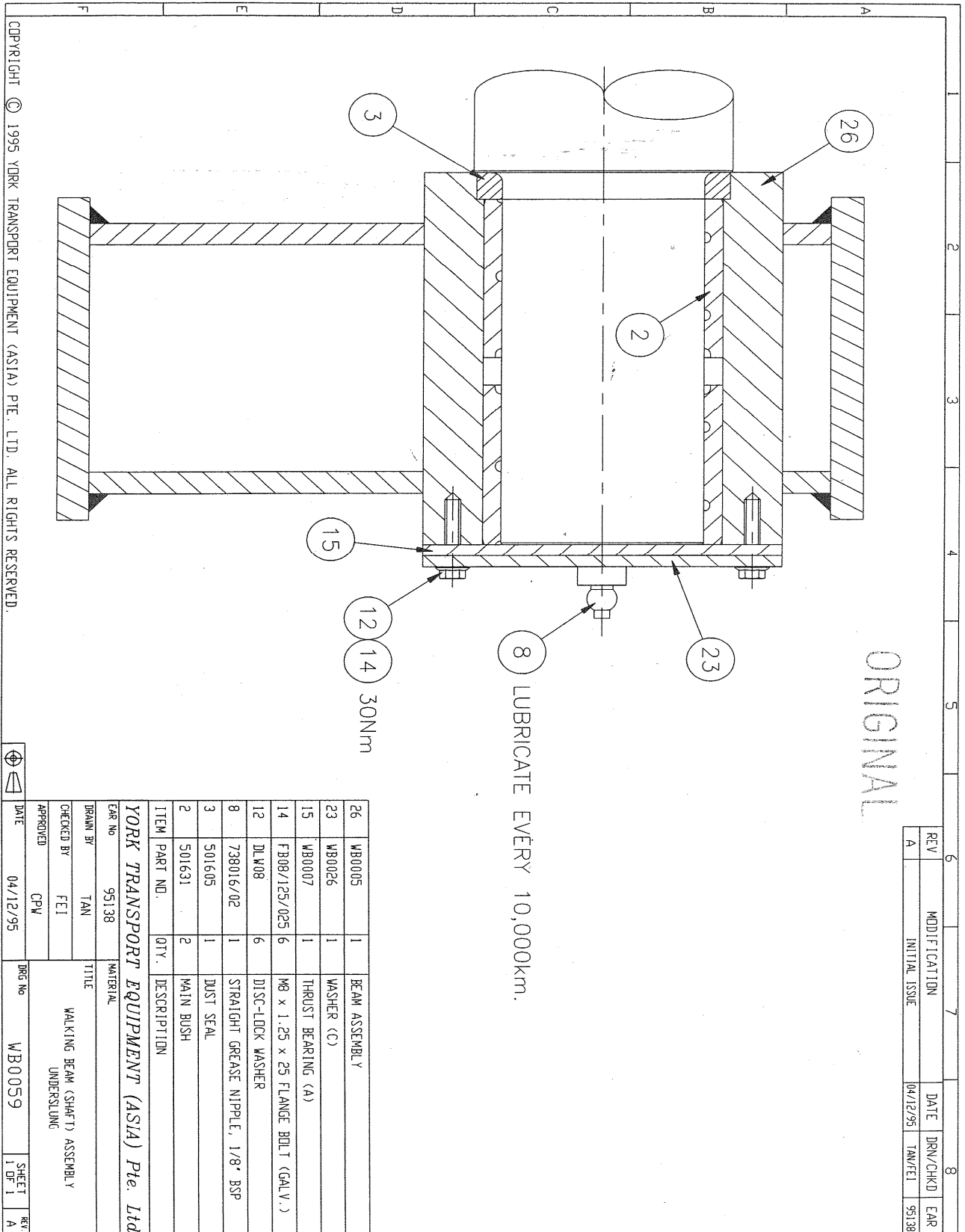
ASSEMBLY NOTE:
TIGHTEN THE CASTELLATED NUT (ITEM 7), WITHIN TORQUE 140Nm - 200Nm,
SET SLOT LINE UP WITH PIN HOLE. INSERT SPLIT PIN (ITEM 6), THROUGH
THE HOLE AND BEND THE PIN.

ITEM	PART NO.	QTY.	DESCRIPTION
29	WB0069	1	INNER END WASHER
28	AG0194	1	END THRUST WASHER
26	WB0008	2	THRUST BEARING (B)
24	HB08/125/040	6	M8 x 1.25 x 40 FLANGE BOLT
23	SN08	6	WASHER (HUB CAP)
13	788901/YDRK	1	HUB CAP - YDRK
12	738016/02	1	1/8" BSP STRAIGHT GREASE NIPPLE
9	502472	1	GASKET
7	788890	1	CASTELLATED SPINDLE NUT
6	788891	1	SPLIT PIN ϕ 8 x 50 LG.
2	501631	2	MAIN BUSHING (HOUSING ASSEMBLY)

YORK TRANSPORT EQUIPMENT (ASIA) Pte. Ltd.

DRN BY SITI TITLE AXLE PIN JOINT ASSEMBLY UNDERSLUNG
CHECKED BY YY
APPROVED FEI

DATE 31-07-02 DRG NO. AG0182 SHEET 1 OF 1 REV A



ORIGINAL

REV	MODIFICATION	DATE	DRN/CHKD	EAR
A	INITIAL ISSUE	04/12/95	TAM/FEI	95138

26	WB0005	1	BEAM ASSEMBLY
23	WB0026	1	WASHER (C)
15	WB0007	1	THRUST BEARING (A)
14	FB08/125/025	6	M8 x 1.25 x 25 FLANGE BOLT (GALV.)
12	DLW08	6	DISC-LOCK WASHER
8	738016/02	1	STRAIGHT GREASE NIPPLE, 1/8" BSP
3	501605	1	DUST SEAL
2	501631	2	MAIN BUSH

ITEM PART NO. QTY. DESCRIPTION

YORK TRANSPORT EQUIPMENT (ASIA) Pte. Ltd.
 MATERIAL
 95138

DRWN BY TAN
 CHECKED BY FEI
 APPROVED CPW
 DATE 04/12/95
 DRG No WB0059
 SHEET 1 OF 1
 REV A

B.O.M. No. : WBA001/960/610

Revision : A

B.O.M. for 30 Tonnes Walking Beam Underslung Suspension (5" Round)

E.A.R. :

Dim A = 960, Dim B = 610

Date : 12/10/09

Item	Sub-Item	Part No.	Change.	Description	Change	Qty.
1		501631		Main Bush (Housing Assembly)		12
2		501605/01		Dust Seal		2
3		788890/YTE		Spindle Nut 3.5" CATTELLATED		4
4		502472		Gasket		4
5		738016/02		Straight Grease Nipple, 1/8" BSP		2
6		788901/YORK		Hub Cap - YORK		4
7		788891		SPLIT PIN Dia 8 x 50		4
8		SW08		M8 SPRING Washer		24
9		HB08/125/040		M8 x 1.25 x 40 HEX Bolt (Galv.)		24
10		DLW08		Disc-Lock Washer		12
11		FB08/125/025		M8 x 1.25 x 25 Flange Bolt (Galv.)		12
12		WB0007		Thrust Bearing (A)		2
13		WB0008		Thrust Bearing (B)		8
14		AG0194		END THRUST WASHER		4
15		WB0069		Inner Washer		4
16		WB0026		Washer (C)		2
17		738016/05		90 Deg. Nipple, 1/8" BSP		4
18		503280/280		M24 U-Bolt C/w Nut & Washer		8
19		788902/YORK/01		Name Plate - York		1
20		WB0081/960/610		Underslung Pedestal Assembly		1
	20.1	WB0004/960		Cross Shaft		1
	20.2	503292/02		Top Plate - 12 Holes		2
	20.3	503292/03		Support Plate		2
	20.4	503292/04		Gusset Plate		4
	20.5	503292/05		Gusset Plate		4
21		WB0001		Housing Assembly (5" Round Axle)		4
	21.1	WB0016		Housing Plate		2
	21.2	WB0017		Housing Side Plate		2
	21.3	WB0018		Housing U-Bolt Plate		2
	21.4	WB0019		Housing		1
	21.5	WB0021		Gusset Plate		4
22		WB0005		WB Beam Assembly 1450		2
	22.1	AG0198		End Spindle		2
	22.2	WB0003		Housing Machining		1
	22.3	WB0020		Top Plate		1
	22.4	WB0022		Side Plate		2
	22.5	WB0023		Support Plate		2
	22.6	WB0024		End Plate		2
	22.7	WB0025		Bottom Plate		1

Items marked with @ are not included in YTEA Accounts/Store B.O.M.

This B.O.M. should be billed with 2 x 5" Round Beam Axle.

Installation & Part List, please refer to drawings WB0031, AG0182 & WB0059